

LINX Japan

Theater and Studio Equipment Products

『 LED PAR LAMP 』

Replacement LED Lamp Module for PAR64

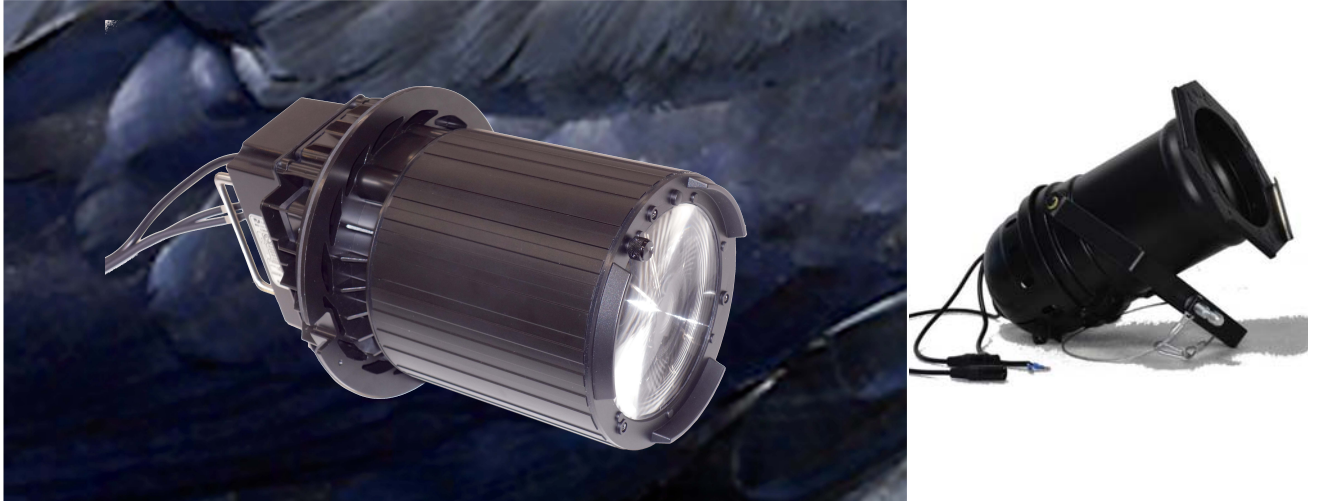


LINX Japan

LED PAR LAMP

This product is an LED lamp module that can be mounted on existing PAR light. It can produce a clear beam like a shield beam sphere.

This product has protection grade IP65 so it can be used in outdoor events. Also, in order to dare to produce a sense of three-dimensional, there is a core on the irradiated surface.



Features

Feature 1	High power	Enough brightness required for the stage and the studio.
Feature 2	Core light	Three-dimensional display is possible by dare setting up the core without flattening the irradiation surface
Feature 3	Flexible beam angle	It is possible to change the beam angle from 16 ° to 53 ° by DMX control or manual operation. About 4 seconds from DMX control minimum to maximum beam angle.
Feature 4	Improvement of quietness	Ensure quietness by adopting low noise fans.
Feature 5	Dimming curve	Three dimming curves corresponding to every scene are standard installed.
Feature 6	Waterproof and dustproof	By adopting the waterproof and dust-proof grade IP65, it can be used outdoors like conventional PAR light.

Normal rated power

Full color	260W
Warm white	220W
Cool white	220W

Light source

Full color	CREE 4in1 Single
Warm white	OSRAM 3200K
Cool white	OSRAM 6000K

Control channel

Full color	4ch ~ 8ch
Warm white	1ch ~ 5ch
Cool white	1ch ~ 5ch

Dimmer curve

A curve	Standard
B curve	Fine
C curve	JATET A

Zoom angle

16° ~ 53° DMX / Manual

Strobe

0 ~ 20Hz DMXControl

Full color RGBW LED Wavelength data

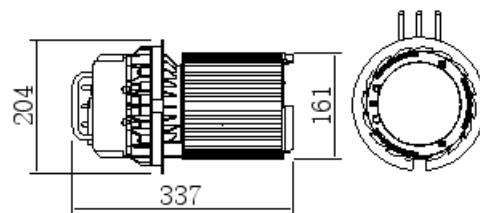
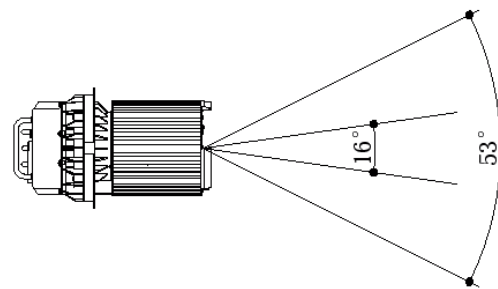
R:	625.7nm	1414K(Color Temperature)
G:	520.1nm	8474K(Color Temperature)
B:	455.3nm	10000K(Color Temperature)
W:	494.0nm	6151K(Color Temperature)

Size

204mm(R)×337mm(L)

Weight

3.2kg



Specifications

Model number	LPL-64AZ-260-F	LPL-64AZ-220-WW	LPL-64AZ-220-CW
Lens	Diffusing lens		
Input voltage(V)	AC95 ~ 240V(Non-dimmer only) 50 - 60Hz		
Power dissipation (W)	260	220	220
Power frequency(H z)	50/60		
Power frequency (K)	RGBW	3200	6000
General colorrendering index (Ra)	--	96	96
LED light source life(h)	Depends on usage environment		
Use angle range (tilt)	±90		
Maximum ambient temperature (°C)	50°		
Maximum surface temperature (°C)	60°		
Minimum irradiation distance (m)	0.5m		
Minimum spacing distance (m)	0.1m		
Dimming range (%)	0-100		
Dimming method	DMX512 / Manual		
Weight(kg)	3.2kg		
Material	Aluminum die-cast ,Polycarbonate		
International protection	IP65		
Power supply plug	Not included		
Power cord	2PNCT(Flexible cable)		
Signal cable	DMX512 cable IN/OUT 0.8m×2		
Accessories	Urethane tape for position adjustment × 4		

※All specifications are subject to change without notice.



LINX JAPAN CO.,LTD.

#1015 Top Room Sinagawa, 1-9-7 Kitashinagawa,
Shinagawa-ku, Tokyo, 140-0001, Japan.

TEL: +81-3-6403-9088

<http://www.linxjp.com> e-mail: info@linxjp.com